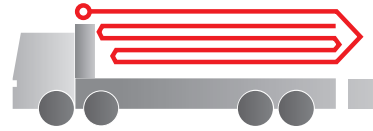


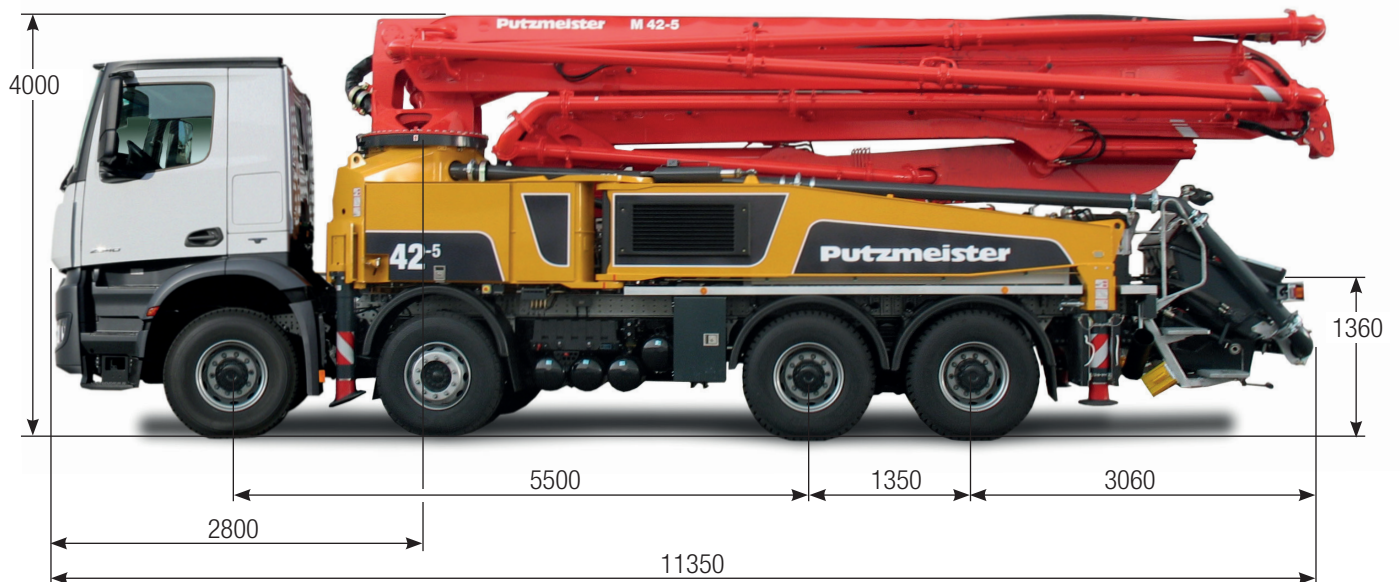
# Truck-mounted concrete pump

# BSF 42-5.16 H

Output up to 170 m<sup>3</sup>/h  
 Delivery pressure up to 85 bar\*



**.16 H LS**  
**.17 i LS**



Note: Standard version. Dimensions and weights depend on truck, pump model and equipment.  
 Dimensions in mm, MB-Actros 3241, Euro 5 as example.  
 For illustration only.

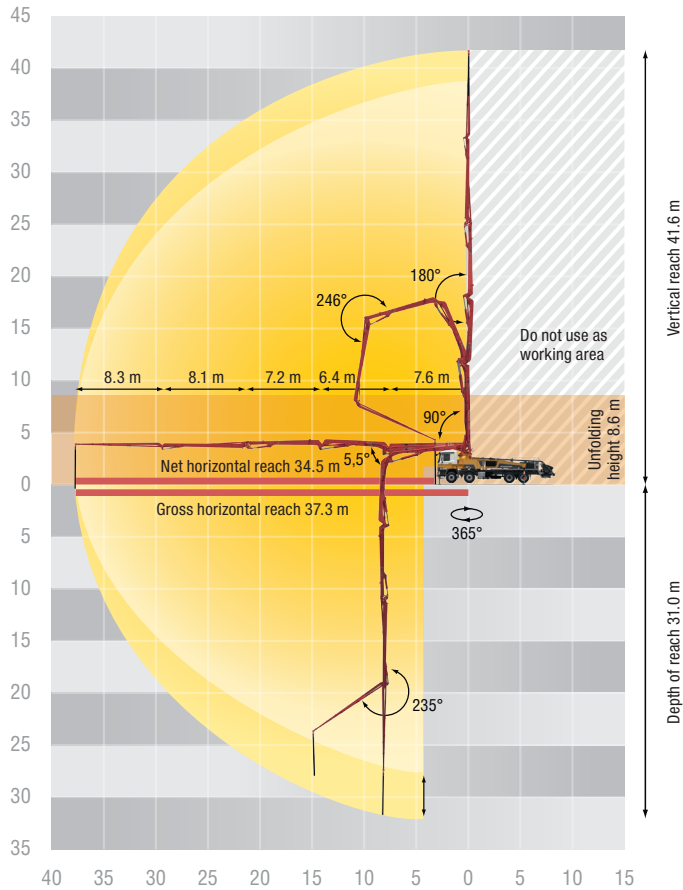
## Technical data

Boom M 42-5		
Sections		5
Reach height	m	41.6
Horizontal reach	gross	m 37.3
	net	m 34.5
Reach depth max.	m	31.0
Unfolding height	m	8.6
End hose length	m	4
Folding system		RZ
Delivery line		DN 125

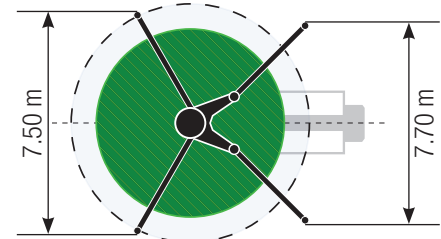
Pump		BSF	.16 H	.16H LS	.17 i LS
Rod side	Output	m <sup>3</sup> /h	160	-	-
	Delivery pressure	bar	85	-	-
	Strokes	1/min.	31	-	-
Piston side	Output	m <sup>3</sup> /h	-	160	170
	Delivery pressure	bar	-	85	85
	Strokes	1/min.	-	26	27
	Delivery cylinder	Ø mm	230	250	250
	Stroke	mm	2100	2100	2100

\*) Delivery line boom max. 85 bar.  
 All data maximum theoretical.

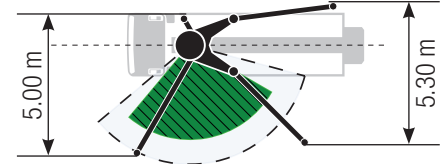
# BSF 42-5 Reach information diagram, Support



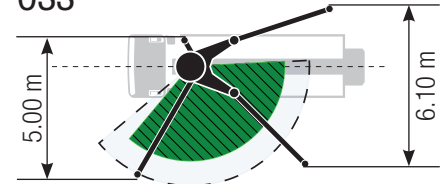
## Standard



## ESC



## OSS



Support width based on center of support leg.  
 Diameter of swivel plate 350 mm.  
 OSS not included in series range.  
 Dimensions can differ depending on configuration.

## Delivery scope Standard Line

Adjustment options with machine fault management (EGD-RC)
Agitator safety switch off, with startup protection
Boom rest RFID-monitored
Box for sponge balls
CAN-Bus system
Cardan shaft maintenance free
Central lubrication of hopper
Concrete hopper with agitator
Connection for filling water tank
Contamination indicator hydraulic oil filter
Delivery cylinder chrome-plated
Delivery note-box, plastic
Diagnose interface

EOC – Ergonic Output Control
EPS – Ergonic Pump System
Ergonic 2.0
Flushing water pump 160 l/min 25 bar
Hand rail left hand side, guard rail right hand side
Hinged elbow with cleaning port
Hose for cleaning 10m incl. bracket and spray nozzle
Hydraulic fluid cooler integrated in the support leg
Hydraulic hose for replacement in hose pack
LED lighting control box
LED lighting control sections
LED lighting hopper
Maintenance free pins rear support leg
Maintenance-optimized support cylinder

Operating manuals 2x (1x paper, 1x CD-ROM), spare part list
Painting: Putzmeister standard
Platform non-skid
Radio remote control ergonic 2.0 with display, also using with cable
Rubber collar on concrete hopper
S-transfer tube switchover fast/ slow
Spectacle wear plate DURO 22
Support plates (4x)
Wash-out port lid with secured sliding pin
Water supply at hopper
Water tank 700 l

See quotation for exact serial delivery scope.  
 Comprehensive range of options available on request.